

# RELEX Solutions

Optimized planning  
for a sustainable future

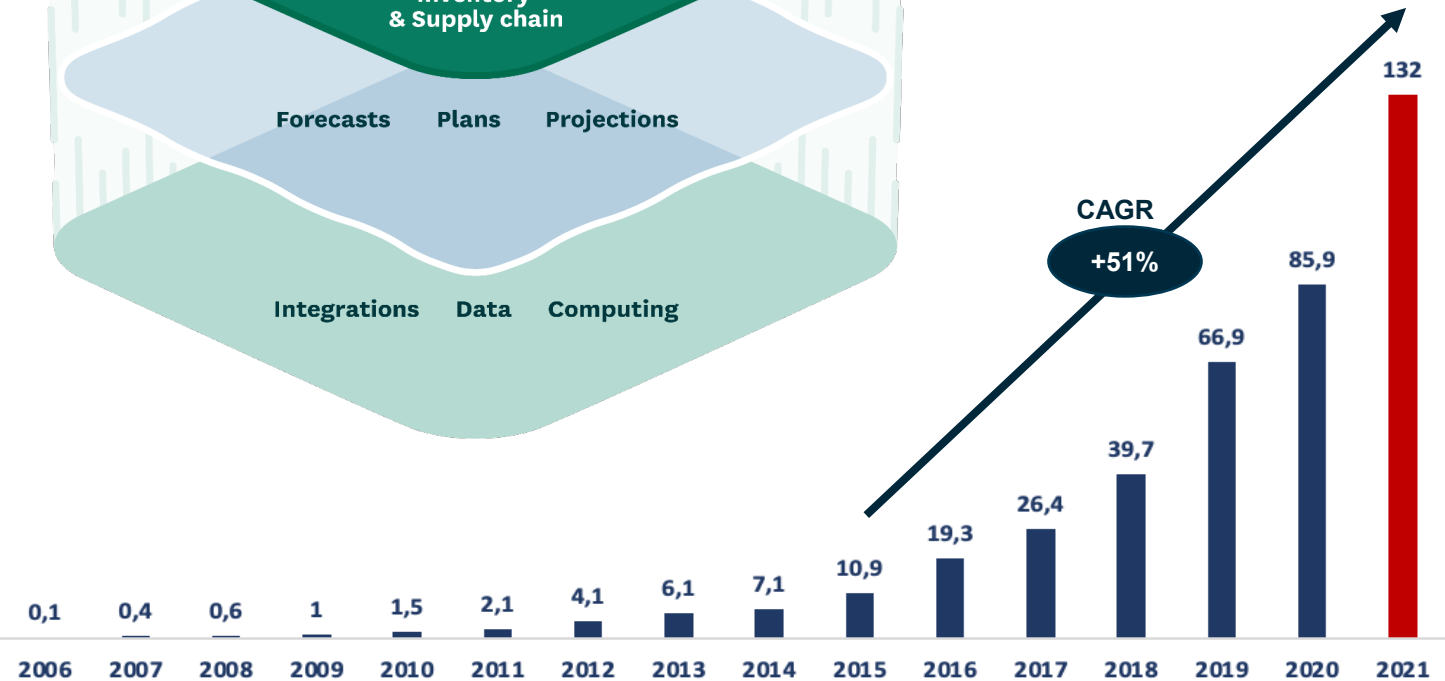
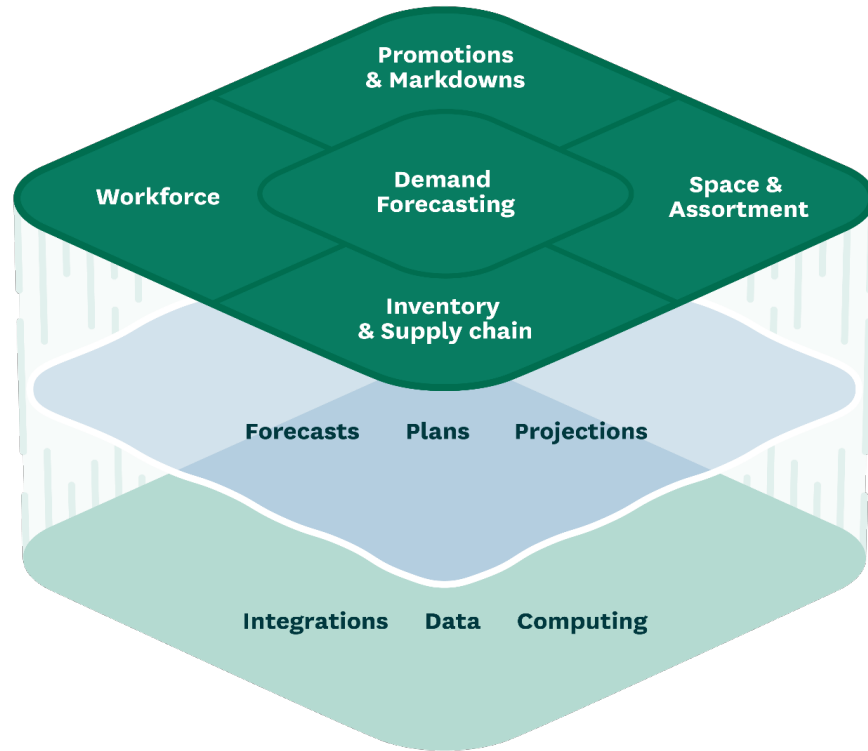
Florian Strecker, Zürich, 16.11.2022

Confidential



# Retail Logistics Excellence

## Integrierte Handelsplanung



# CO2 Optimierung

Zwei wesentliche Treiber in der Supply Chain



Verderb



Transport

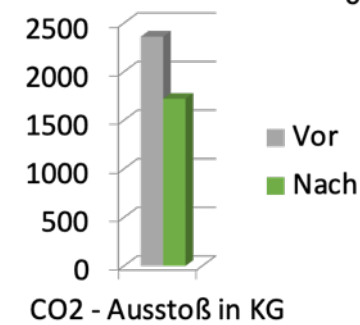
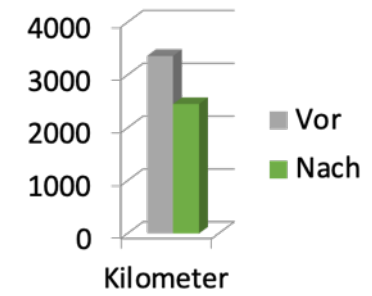
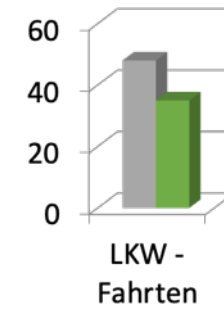
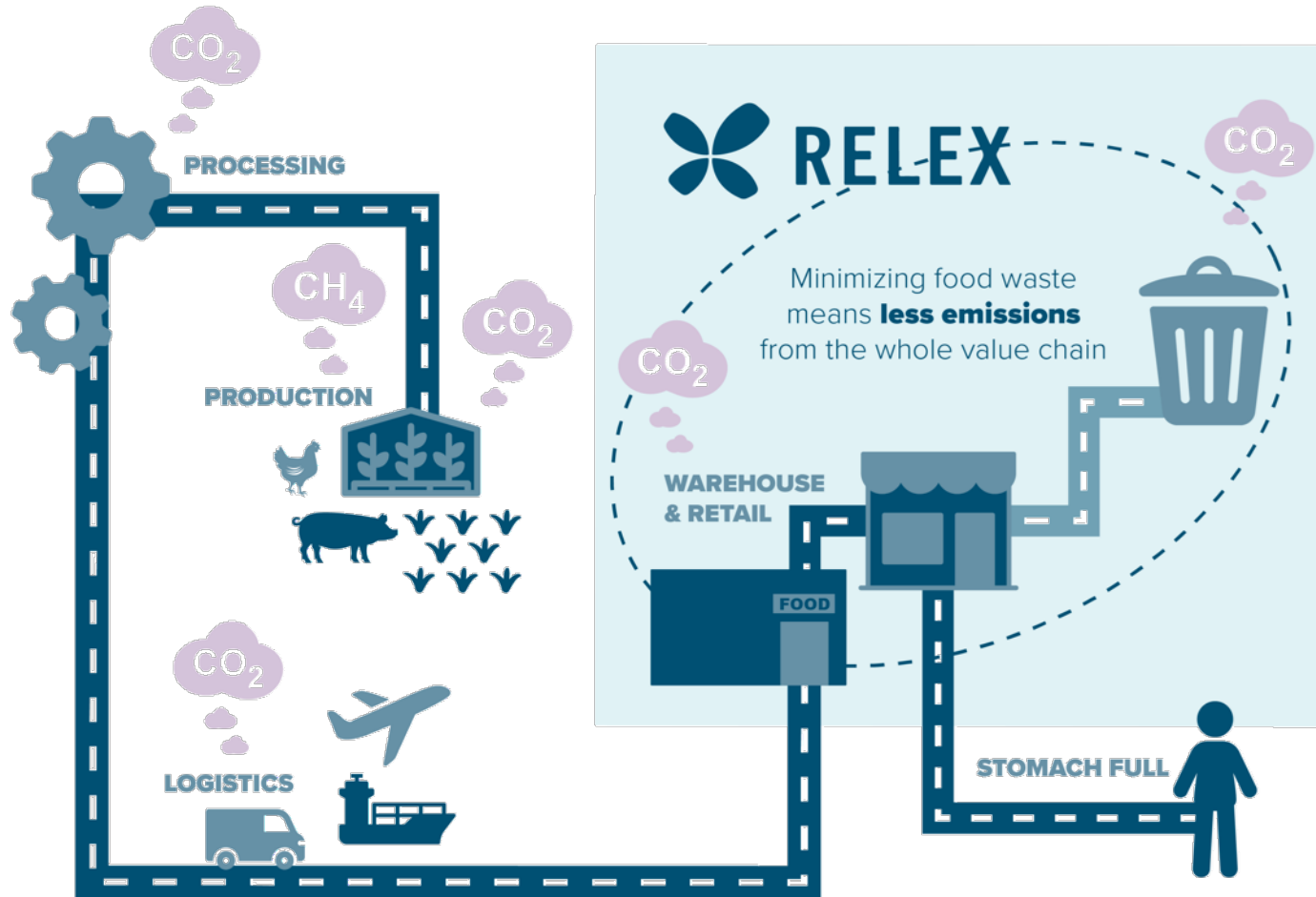
- Verderb verursacht hohe CO2 Emissionen in Produktion, Verarbeitung und Logistik
- Volle Auslastung der LKW durch CO-MRP Optimierung
- Optimierung von Anlieferzyklen



# Zuletzt - Weniger LKWs durch bessere Planung

- 27,08% CO<sup>2</sup>

**Bünting**  
UNTERNEHMENSGRUPPE



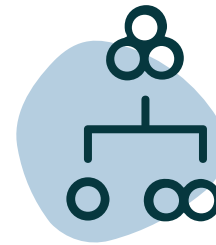
# The RELEX fight against food waste



accurate,  
granular  
forecasts



optimized  
ordering

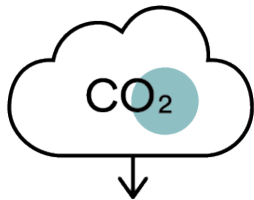


connecting  
Stores, DCs  
and Suppliers

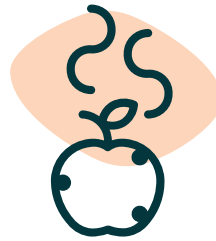
Simultaneously  
Balancing :



Up to  
**40%**  
reduction



**29,000**  
tons of CO2 saved



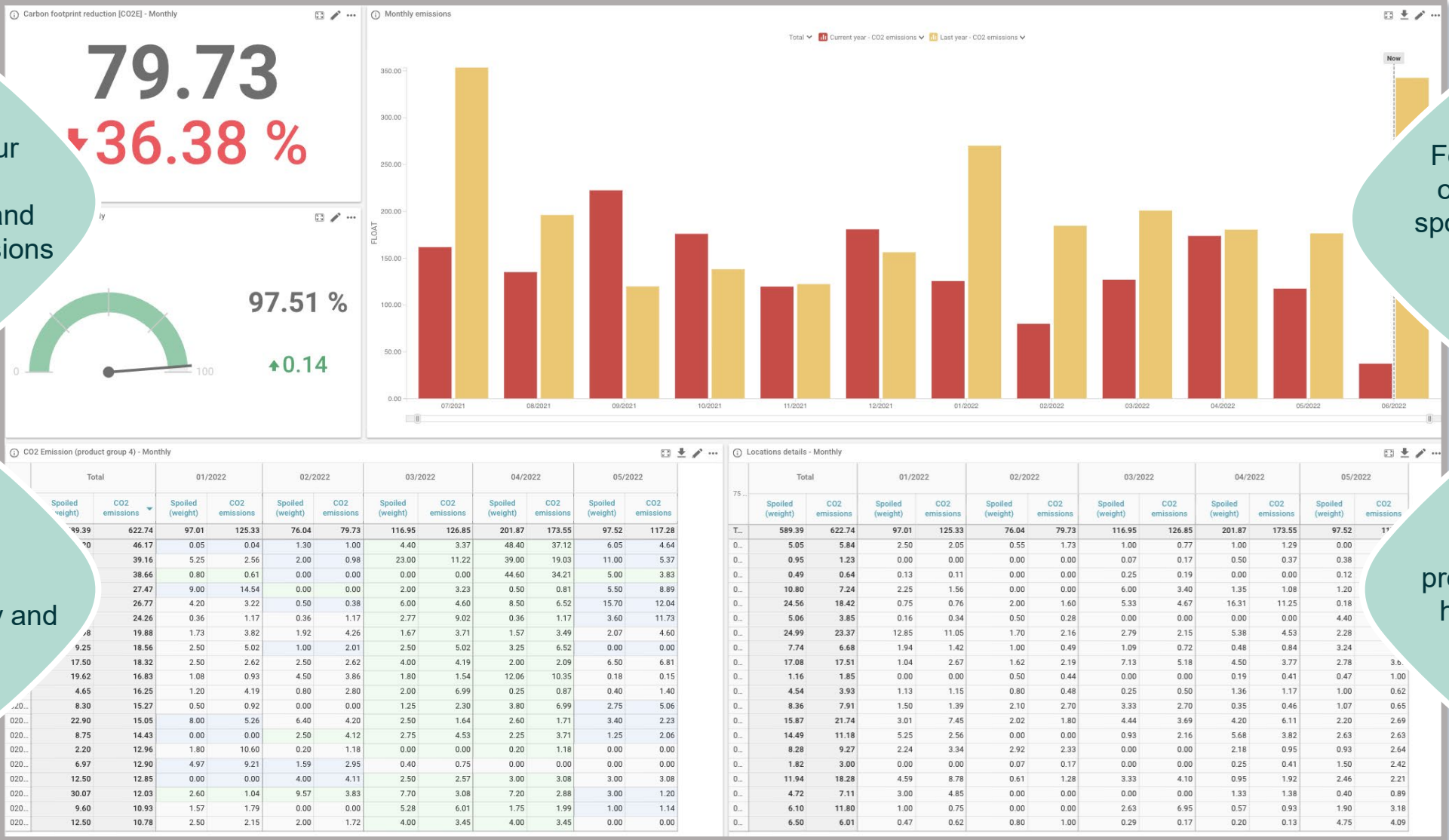
**9,000,000**  
kgs of food reduced waste



# RELEX Sustainability Dashboard

Clear view to your product spoilage and CO<sub>2</sub> emissions

Follow your products' spoilage, and CO<sub>2</sub> emissions



Follow your operations' spoilage and emission progress

Find the balance between availability and spoilage

Identify products with high carbon footprint





# Thank you!

**Florian Strecker**  
*Account Executive*

RELEX Solutions GmbH  
Currently working from Home near Düsseldorf | Germany  
Phone: +49 (0) 177 59 43 155  
E-Mail [florian.strecker@relexsolutions.de](mailto:florian.strecker@relexsolutions.de) | Internet [www.relexsolutions.de](http://www.relexsolutions.de)

[www.relexsolutions.com](http://www.relexsolutions.com)

 [@RelexSolutions](https://twitter.com/RelexSolutions)

 [RELEX Solutions](https://www.linkedin.com/company/relex-solutions)

